

D-Link Quick Installation Guide

This product can be set up using any current web browser, i.e., Internet Explorer 6 or Netscape Navigator 6.2.3.



DSL-504T

ADSL Router

Before You Begin

1. If you purchased this Router to share your high-speed Internet connection with other computers, you must have an established Internet account from an Internet Service Provider (ISP).
2. It's best to use the same computer that is connected to your ISP for configuring the DSL-504T ADSL Router. The DSL-504T acts as a DHCP server and will assign all the necessary IP address information on your network. See at the Quick Installation Guide or the Manual on the CD-ROM for setting each network adapter to automatically obtain an IP address.

Check Your Package Contents



DSL-504T ADSL Router



CD-ROM (containing User Manual)



Ethernet Cable (CAT5 UTP)



ADSL Cable (For AUS 200CM)



Power Adapter

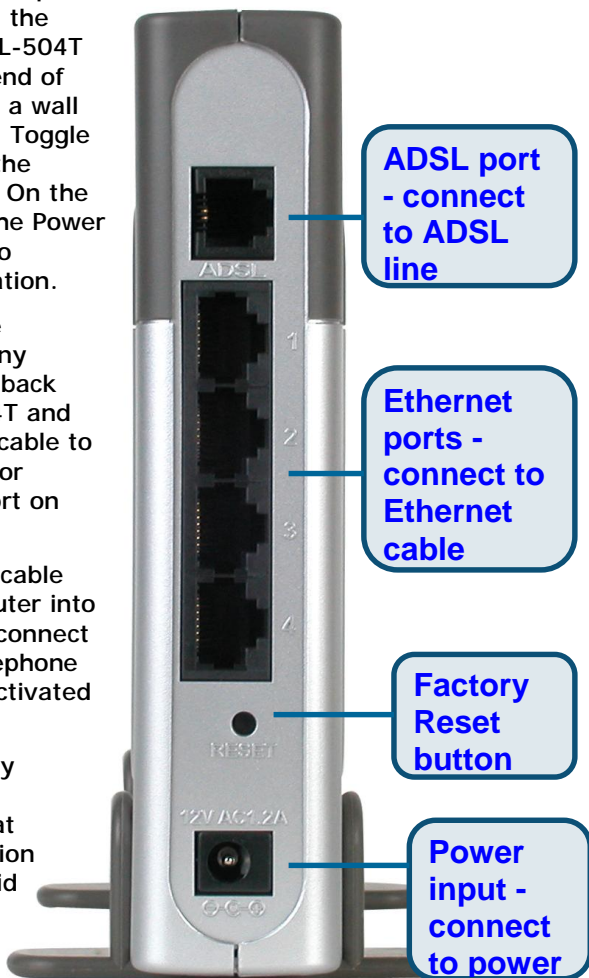


Using a power adapter with a different voltage rating will damage and void the warranty for this product.

1

Connecting the Router

1. Connect the power adapter to the power input at the back panel of the DSL-504T then plug the other end of the power adapter to a wall outlet or power strip. Toggle the power switch to the powered on position. On the front of the device, the Power LED will light green to indicate proper operation.
2. Insert one end of the Ethernet cable into any Ethernet port on the back panel of the DSL-504T and the other end of the cable to an Ethernet Adapter or available Ethernet port on your computer.
3. Insert the telephone cable included with the Router into the ADSL port, then connect the cable to your telephone line. (Line must be activated for ADSL use)
4. Check the LED display on the front of the Router to confirm that the Ethernet connection has been made. (Solid light indicates a connection for the corresponding port)



2

Configure IP Settings

To connect to the network, make sure the network adapter in your computer is configured properly. The following section describes how to configure the network adapter to obtain an IP address automatically for the DSL-504T ADSL Router.

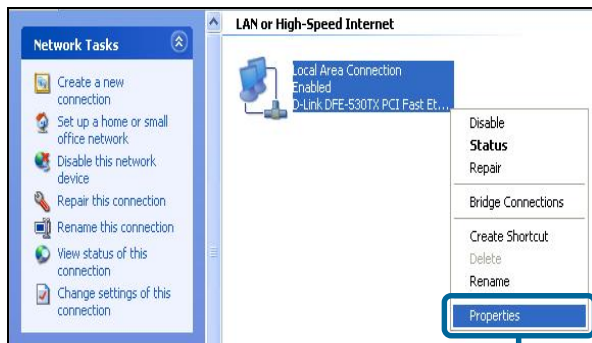
For Microsoft Windows XP

Go to **Start** > select **Settings** > click **Control Panel** > Double-click on the **Network Connections** icon



Double-click on **Network Connections**

Right-click the **Local Area Connection** icon, and then select **Properties**.



Select **Properties**

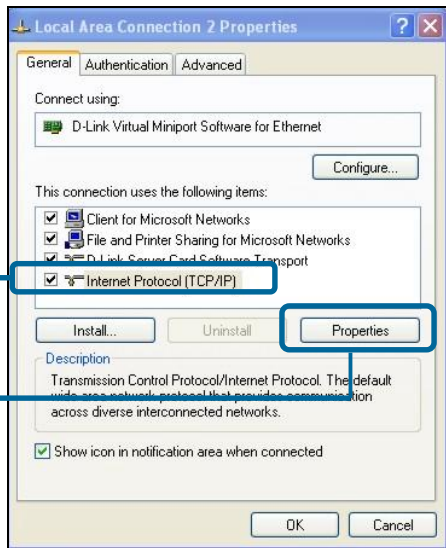
2

Configure IP Settings cont...

The dialog box displays with a list of currently installed network items.

Click **Internet Protocol (TCP/IP)**

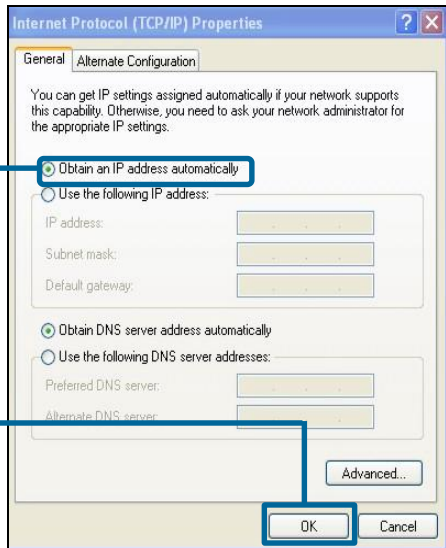
Click **Properties**



Make the choice to get IP settings assigned automatically.

Select **Obtain an IP address automatically**

Click **OK**



3

Configuring the Router

To use your Web browser to access the web pages used to setup the Router, your computer must be configured to "Obtain an IP address automatically", that is, you must change the IP network settings of your computer so that it is a DHCP Client. If you are using Windows XP and do not know how to change your network settings, refer to Step 2. You may also read the User Manual for instructions on changing IP settings for computers running Windows operating systems.

Open your Web browser and type <http://10.1.1.1> into the URL address box. Press **Enter** or **Return**.



The Login page appears

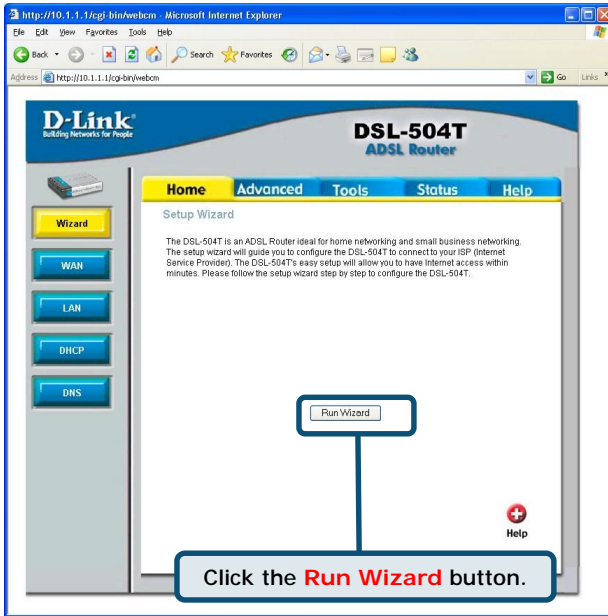
When you first log in, your Login Name is **admin**; your password is also **admin**. These may be changed later.



3

Configuring the Router cont...

Once you have logged in, the Home directory tab is prominent with the setup Wizard menu displayed. Most users will be able to use the setup wizard to establish the ADSL connection to your ADSL Internet Service Provider (ISP). To begin using the setup wizard, click on the **Run Wizard** button in the middle of the web page.



A pop-up menu will appear. This pop-up menu is the **Setup Wizard**. The Setup Wizard procedure consists of four general steps:

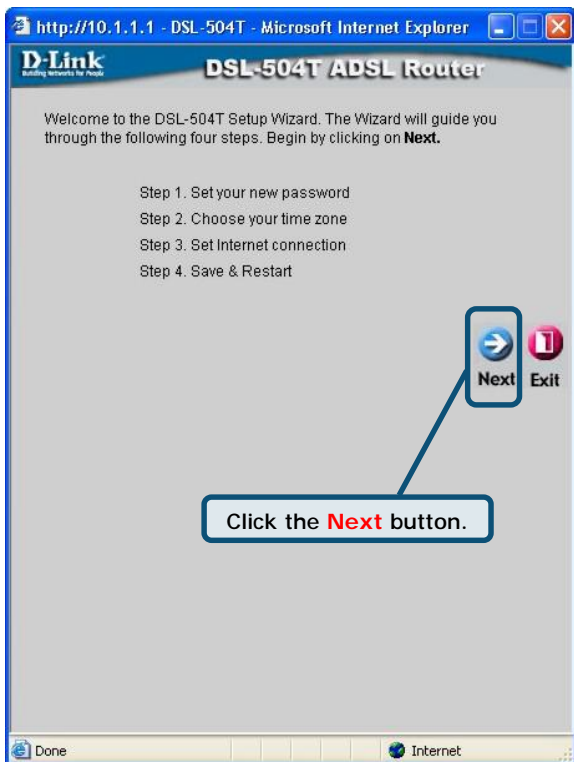
1. Set your new password
2. Choose your time zone
3. Set Internet connection
4. Save & Restart

When you setup the Internet connection, you will need to enter the information provided to you from your ISP. The type of information you need depends on the type of connection you are setting up.

4

Configuring the Router cont...

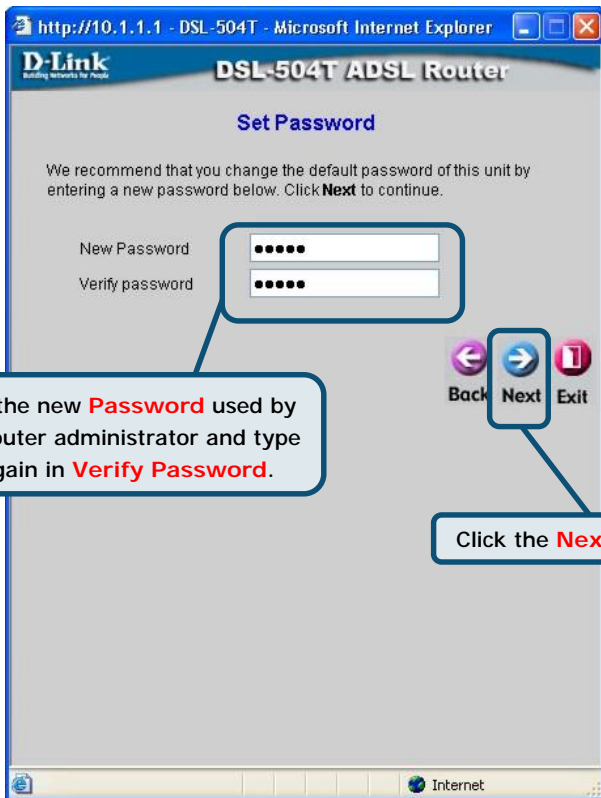
The first Setup Wizard menu lists a summary of the steps required to complete the setup. Click the **Next** button to begin setup.



4

Configuring the Router cont...

Set the new **Password** used by the administrator to configure the Router. You have already used the default Password "admin" to access the web manager. You can choose another Password. The login User Name "admin" cannot be changed. Type in the new Password and type it a second time to **Verify Password**. Click **Next** to continue.



4

Configuring the Router cont...

Now configure the **Time Zone** used for the Router's system clock. Select the appropriate time zone setting for your location.

The screenshot shows a web browser window titled "http://10.1.1.1 - DSL-504T - Microsoft Internet Explorer". The page header includes the D-Link logo and "DSL-504T ADSL Router". The main heading is "Choose Time Zone". Below this, it says "Select the appropriate time zone for your location and click **Next** to continue." A dropdown menu is open, showing "(GMT+10:00) Canberra, Melbourne, Sydney". To the right of the dropdown are three buttons: "Back" (left arrow), "Next" (right arrow), and "Exit" (stop sign). A callout box points to the "Next" button with the text "Click the **Next** button." Another callout box points to the dropdown menu with the text "Select the **Time Zone** where you are located."

Next you will **Set the Internet Connection Type** for the WAN interface. Your ISP should have given this information to you. If you do not know what type of connection to use, exit the Setup Wizard and contact your ISP for the information. The Setup wizard menu that appears when you click the **Next** button depends on what connection type you select.

4

Configuring the Router cont...

PPPoE / PPPoA Connections

You will need to select either PPPoE or PPPoA for your connection type in this menu. Type in the Username and Password used to identify and verify your account to the ISP. Select the Connection Type used for encapsulation on your ADSL service. Click Next to continue. If you are not sure what Connection Type, please check with your ISP.

The screenshot shows the configuration interface for a D-Link DSL-504T ADSL Router. The browser address bar shows 'http://10.1.1.1 - DSL-504T - Microsoft Internet Explorer'. The page title is 'DSL-504T ADSL Router' and the sub-header is 'Set PPPoE / PPPoA'. The instructions on the page are: 'Enter the PPPoE/PPPoA information provided to you by your ISP. Click **Next** to continue.'

The form contains the following fields:

- Connection Type: A dropdown menu with 'PPPoA VC-Mux' selected.
- User Name: A text input field containing 'username'.
- Password: A password input field with masked characters '••••'.

At the bottom of the form are three buttons: 'Back' (left arrow), 'Next' (right arrow), and 'Exit' (stop sign).

Callout boxes provide the following instructions:

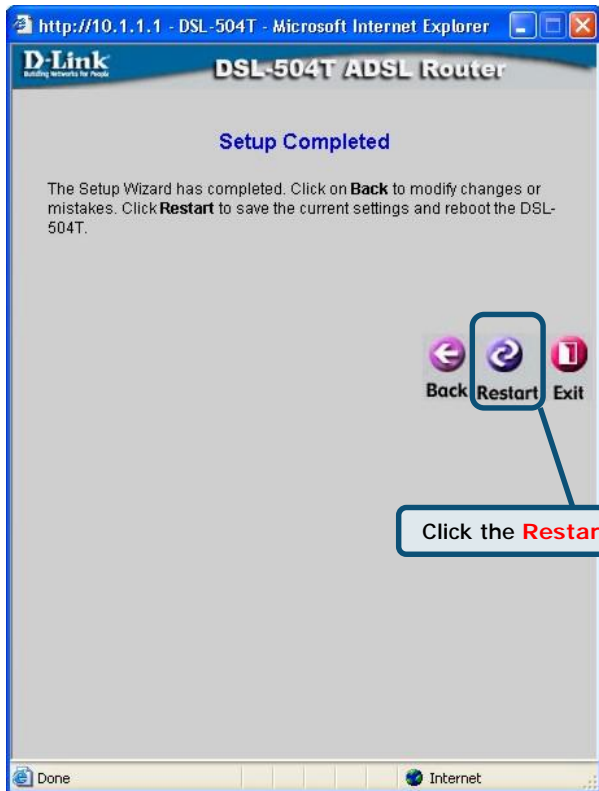
- 'Select the **Connection Type** as instructed by your ISP account.' points to the 'Connection Type' dropdown.
- 'Type the **Username** and **Password** for your ISP account.' points to the 'User Name' and 'Password' fields.
- 'Click the **Next** button.' points to the 'Next' button.

4

Configuring the Router cont...

Setup Completed

All the settings for the connection are now completed. Click the **Restart** button to save the new settings and restart the Router. It will take about two minutes to restart the Router.



Do not turn off the Router while it's restarting.

A message will appear informing you that "The device has rebooted successfully". You can now launch your web browser to access the Internet.

Technical Support

You can find software updates and user documentation on the D-Link website.

Tech Support for customers within Australia:

D-Link Technical Support over the Telephone:

1300-766-868

Monday to Friday 8:00am to 8:00pm EST

Saturday 9:00am to 1:00pm EST

D-Link Technical Support over the Internet:

<http://www.dlink.com.au>

[email:support@dlink.com.au](mailto:support@dlink.com.au)

Tech Support for customers within New Zealand:

D-Link Technical Support over the Telephone:

0800-900-900

Monday to Friday 8:30am to 8:30pm

Saturday 9:00am to 5:00pm

D-Link Technical Support over the Internet:

<http://www.dlink.co.nz>

[email:support@dlink.co.nz](mailto:support@dlink.co.nz)

D-Link®
Building Networks for People